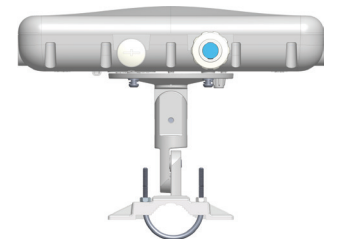
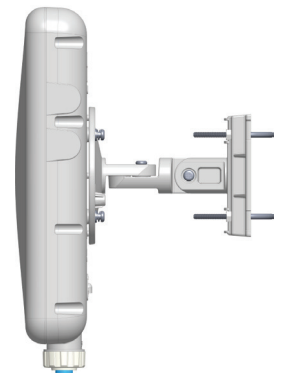
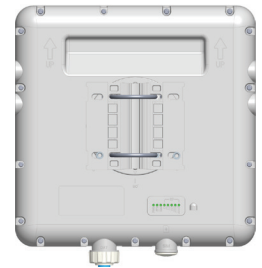


CPE12000U

The CPE12000U Series consists of flexible CPE units, designed to deliver extended coverage and high data throughput in the 5 GHz unlicensed band. The CPE12000U units are designed to operate on license-free bands, enabling a more cost-effective non- or near-LOS operation.

LTE Specifications

LTE Interface	
Standard Compliance	3GPP Release 12
LTE UE Category	Cat 12
Duplex Mode	TDD
Frequency Bands	5.150-5.950 GHz
Channel bandwidth	5 MHz, 10 MHz, 15 MHz, 20 MHz
Uplink Modulation	QPSK, 16QAM, 64QAM
Downlink Modulation	QPSK, 16QAM, 64QAM, 256QAM
L1	DL MIMO 4x4
L2 & L3	Multiple APN PLMN and Cell Selection
Authentication	USIM SIM function (1.8V and 3.3V SIM and USIM card)
QoS	Non-GBR, GBR



CPE Specifications

CPE12000U Outdoor	
Dimensions (HxWxD)	330 x 330 x 72 mm 12.9 x 12.9 x 2.8 in
Weight	< 3.5 Kg 7.7 lb
User Interface	1 RJ45 10/100M ETH LED - System, LAN, SIM, RF(4) SIM Support - SIM card slot
Maximum Transmit Power	21 dBm
Antenna	2TX/4RX, 20 dBi
Power Source	100~240 VAC
Environmental	IP67
Operating Temperature	-40° to 55° C -40° to 131° F